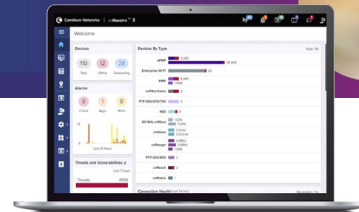


XE3-4TN Wi-Fi 6 Outdoor Access Point

802.11ax Tri-Radio 4x4/2x2 Access Point with N-type antenna connectors

XE3-4TN Quick Look

- Tri-radio/tri-band Wi-Fi 6/6E
- Software-defined 5 GHz/6 GHz radio
- AFC compliant for 6 GHz operation*
- 6.6 Gbps aggregate data rate
- 2.5 GbE and 1 GbE uplink ports
- Outdoor-rated IP67 enclosure



Outdoor High-Density, Future-Proof Wi-Fi

The XE3-4TN is an outdoor-rated tri-radio Wi-Fi 6/6E 4x4/2x2 access point (AP) designed to deliver future-proof performance and value for building next-generation networks. Wi-Fi 6 delivers faster and more efficient wireless network connections than previous-generation Wi-Fi technologies.

Wi-Fi 6E extends the capacity of Wi-Fi into the 6 GHz band, more than tripling the wireless spectrum available.

Software-Defined Radio Provides Flexibility

The software-defined radio (SDR) provides flexibility to match the capability of the connected clients and to match the regulatory limits in the 6 GHz band. Where 6 GHz outdoor is not allowed, operate the XE3-4TN in dual 5 GHz mode to expand capacity in the allowed 5 GHz channels. Where 6 GHz outdoor is allowed, and Wi-Fi clients support it, use tri-radio mode to dramatically increase density in a reduced RF interference environment.

3-Year Warranty

The XE3-4TN comes with an industry-leading 3-year hardware warranty, providing return and repair service on the access point and multiple tiers of customer support, from the business day to extended hours and advanced replacement.

*Automatic frequency coordination (AFC) is under development and will be a cloud service that will assign operating channel and power. AFC is required for 6 GHz operation outdoors.

XE3-4TN Wi-Fi 6 Outdoor Access Point

Access Point Specifications*			
FCC	Ch 1–11, 36–64, 100–144, 149–165	Power	Typical power 25W (802.3at) Maximum power 62W with PoE out enabled and sourcing 30W Passive PoE output: 30V or 48V nominal at up to 30 Watts
ISED	Ch 1–11, 36–64, 100–116, 149–165		
ETSI	Ch 1–13, 36–64, 100–140		
ROW	Ch 1–14, 36–64, 100–144, 149–177 (Individual country limits may apply)	Dimensions	220mm x 200mm x 86mm (8.66 in x 7.87 in x 3.39 in)
6 GHz Channel** FCC/IC/ROW EU	Ch 1–233	Weight	2,920 g (6.44 lb)
	Ch 1–93	MTBF	498,910 hours @ 25°C 132,618 hours @ 65°C
	Ch 1–93		
Radios	5 GHz/6 GHz 802.11a/n/ac/ax, 4x4 SW configurable	Mount Options	Pole or wall mount
	5 GHz 802.11 a/n/ac Wave 2/ax, 2x2	Security	Kensington lock slot
	2.4 GHz 802.11 b/g/n/ax, 2x2 BLE 4.1, GPS receiver	LEDs	Multi-color status LEDs
Wi-Fi	802.11 a/b/g/n/ac Wave 2/ax	Ambient Operation Temperature	-40°C to 65°C (-40°F to 149°F)
SSID Security	WPA3, WPA2 (CCMP, AES, 802.11i), WPA2 enterprise (802.1x/EAP), WPA PSK (TKIP), WEP, open	Storage Temperature	-40°C to 70°C (-40°F to 158°F)
Max PHY Rate	5/6 GHz radio 4,804 Mbps 5 GHz radio 1,201 Mbps 2.4 GHz radio 573.5 Mbps	Humidity	95% RH non-condensing
Ports	1 x IEEE 100/1000/2500 Mbps Ethernet 1 x IEEE 10/100/1000 Mbps Ethernet with PoE out	Certifications	WiFi Alliance 80211a/b/g/n/ac/ax, PP2.0 FCC, ETSI, CE, IC, IEC60950, IEC62368, EN61373, EN50121, EN 303 413 (GPS), IEC 60068-2-5 (solar radiation), IEC 60529 (Ingress Protection), TAA
Max EIRP	Radio 1: 2x2 2.4 GHz = 28dBm Radio 2: 2x2 5 GHz = 28dBm Radio 3: 4x4 5 GHz/6 GHz = 25dBm The cable loss and antenna gain are separate from any radio conducted power specification. Please refer to the Antenna Guide for more details. EIRP may be limited by country regulations.		

*Some features will be included in subsequent firmware releases.

**FCC, IC, EU DFS channels not supported in first release.

XE3-4TN Wi-Fi 6 Outdoor Access Point

Network Specifications*

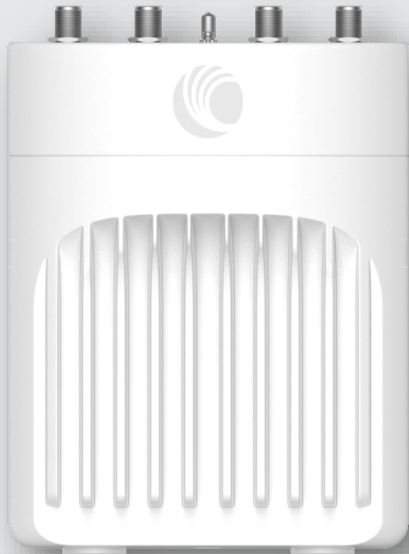
Operational Modes	Standalone Cloud-managed cnMaestro™ or VM Cloud-managed XMS	RF Management	Multi-modal RF optimization supporting AutoRF (cnMaestro) performed in the intelligent edge AP. Out-of-band RF spectrum analysis, RF monitor with chn/noise/interference
WLAN	1500 clients, 16 SSIDs WPA-TKIP, WPA2 AES, 802.1x 802.11w PMF		
Authentication Encryption	Hotspot 2.0, 802.1x EAP-SIM/AKA, EAP-PEAP, EAP-TTLS, EAP-TLS, MAC authentication local database or RADIUS	Network	TCP connection log, NAT logging firewall, DHCP server, L2, L3 or DNS-based access control, VLAN pooling, RADIUS attribute VID, VLAN per SSID per user
Scheduled WLAN	On/off by day, week, time of day	Band Steer Load Balance	Yes
Guest Access	EasyPass guest self-registration, guest ambassador, ePSK, vouchers, rate limit, splash page hosted on AP or cnMaestro client isolation per SSID, per network	Tunnel	L2TP, L2oGRE, PPPoE
Data Limit	Client rate limit per SSID	Network & RF Management Tools	Wired and wireless remote packet capture, auto-logging, ZapD performance tool, rogue AP detection
Subscriber QoS	WMM	Services	WIDs/WIPs, NTP, Syslog, SNMP traps, DNS proxy, auto-off on WAN failure, layer 2–layer 7 application visibility and control
Fast Roaming	802.11r, OKC, enhanced roaming	API	RESTful management and statistics API Presence location APIs
Mesh	Multi-hop, either band		
Channel Selection	Multi-modal channel selection with AutoChannel and AutoTune (cnMaestro)		

*Some features will be included in subsequent firmware releases.

Standards

Wi-Fi Protocols	802.11a/b/g/n/ac wave 2, 802.11ax, up to 4x4. 20/40/80/160 MHz, MU-OFDMA, MU-MIMO, TWT, MIMO, VHT MCS rates, 16/64/256/1024/4096-QAM, HT20/40/80/160 MHz Transmit beam steering, airtime fairness, AMSDU, AMPDU, RIFS, STBC, LDPC, MIMO power save, MRC, BPSK, QPSK, CCK, DSSS, OFDM IEEE 802.11d/e/h/i/k/r/u/v/w
------------------------	---

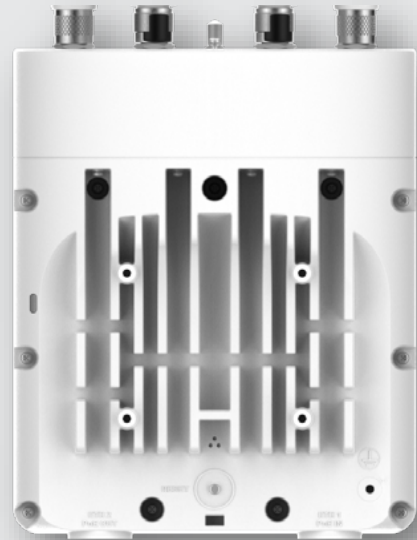
XE3-4TN Wi-Fi 6 Outdoor Access Point



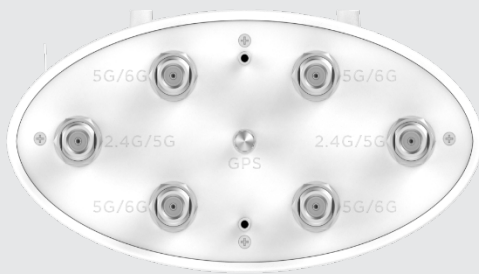
Front



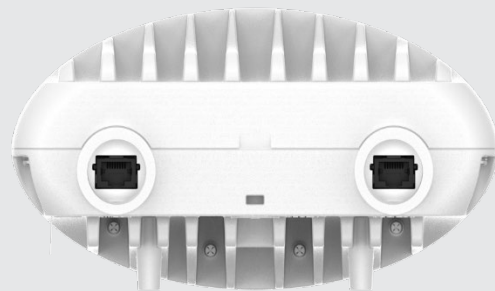
Side



Back



Top



Bottom

XE3-4TN Wi-Fi 6 Outdoor Access Point

XE3-4TN Ordering Information

XE3-4T	Regulatory Model
XE3-4TN0A00-US	XE3-4TN Outdoor Wi-Fi 6E 4x4 SDR Access Point, 2.5 GbE, US
XE3-4TN0A00-EU	XE3-4TN Outdoor Wi-Fi 6E 4x4 SDR Access Point, 2.5 GbE, EU
XE3-4TN0A00-RW	XE3-4TN Outdoor Wi-Fi 6E 4x4 SDR Access Point, 2.5 GbE, 6 GHz radio disabled, RW
XE3-4TN0A06-RW	XE3-4TN Outdoor Wi-Fi 6E 4x4 SDR Access Point, 2.5 GbE, 6 GHz radio enabled, RW
XE3-4TN0A00-CA	XE3-4TN Outdoor Wi-Fi 6E 4x4 SDR Access Point, 2.5 GbE, CA
N000000L142A	PoE injector, 60W, 5 GbE, Indoor, Energy Level 6 Supply

Antenna Ordering Information*

ANT-OM-1X1-05	Tri-Band 2.4 GHz/5 GHz/6 GHz, 5 dBi, omni-directional 1x1 antenna with N-male connector
ANT-D30-2X2-02	Dual-band 2.4/5GHz 2x2 MIMO directional 60deg 6/7.5dBi
ANT-D35-4X4-01	Dual band 5 GHz/6 GHz, 13 dBi, 35° beamwidth 4x4 antenna with N-female connectors, bracket included, cables sold separately
ANT-D60-2X2-02	Dual-band 2.4/5GHz 2x2 MIMO directional 30deg 11.5/14dBi
ANT-D60-4X4-02	Dual band 5GHz/6GHz, 11dBi, 60 degree beamwidth 4x4 antenna with N-female connectors, bracket included, cables sold separately
ANT-GPS-01	GPS antenna
ANT-CB-10MM-03	Antenna cable N-type M to M, LMR400, 3m, qty 1 cable
ANT-CB-10MM-04	Antenna cable N-type M straight to N-type M Right Angle-LMR400, 3m, Qty 1 cable

*See XE3-4TN [Antenna Guide](#) for more details.

Download Antenna
Selection Guide

cnMaestro X Ordering Information

MSX-SUB-XE3-4TN-1	cnMaestro X for one XE3-4TN AP. Creates one Device Tier 3 slot. Includes Cambium Care Pro support. 1-year subscription
MSX-SUB-XE3-4TN-3	cnMaestro X for one XE3-4TN AP. Creates one Device Tier 3 slot. Includes Cambium Care Pro support. 3-year subscription
MSX-SUB-XE3-4TN-5	cnMaestro X for one XE3-4TN AP. Creates one Device Tier 3 slot. Includes Cambium Care Pro support. 5-year subscription

XE3-4TN Wi-Fi 6 Outdoor Access Point

Cambium Care Ordering Information

CCADV-SUP-XE3-4TN-1	Cambium Care Advanced, 1-year support for one XE3-4TN Wi-Fi 6/6E AP. 24x7 TAC support, SW updates, and NBD advance replacement for HW
CCADV-SUP-XE3-4TN-3	Cambium Care Advanced, 1-year support for one XE3-4TN Wi-Fi 6/6E AP. 24x7 TAC support, SW updates, and NBD advance replacement for HW
CCADV-SUP-XE3-4TN-5	Cambium Care Advanced, 3-year support for one XE3-4TN Wi-Fi 6/6E AP. 24x7 TAC support, SW updates, and NBD advance replacement for HW
CCPRO-SUP-XE3-4TN-1	Cambium Care Pro, 1-year support for one XE3-4TN Wi-Fi 6/6E AP. 24x7 TAC support and SW updates
CCPRO-SUP-XE3-4TN-3	Cambium Care Pro, 3-year support for one XE3-4TN Wi-Fi 6/6E AP. 24x7 TAC support and SW updates
CCPRO-SUP-XE3-4TN-5	Cambium Care Pro, 5-year support for one XE3-4TN Wi-Fi 6/6E AP. 24x7 TAC support and SW updates
CCADV-UPG-XE3-4TN-1	Cambium Care Advanced Add-on to cnMaestro X, 1-year support for one XE3-4TN. 24x7 TAC support, SW updates, and NBDS advance replacement for HW
CCADV-UPG-XE3-4TN-3	Cambium Care Advanced Add-on to cnMaestro X, 3-year support for one XE3-4TN. 24x7 TAC support, SW updates, and NBDS advance replacement for HW
CCADV-UPG-XE3-4TN-5	Cambium Care Advanced Add-on to cnMaestro X, 5-year support for one XE3-4TN. 24x7 TAC support, SW updates, and NBDS advance replacement for HW

LIMITED WARRANTY

Cambium Networks XE3-4TN Wi-Fi 6 Access Point includes a 3-year hardware warranty.

ABOUT CAMBIUM NETWORKS

Cambium Networks enables service providers, enterprises, industrial organizations, and governments to deliver exceptional digital experiences and device connectivity with compelling economics. Our ONE Network platform simplifies management of Cambium Networks' wired and wireless broadband and network edge technologies. Our customers can focus more resources on managing their business rather than the network. We make connectivity that just works.

cambiumnetworks.com